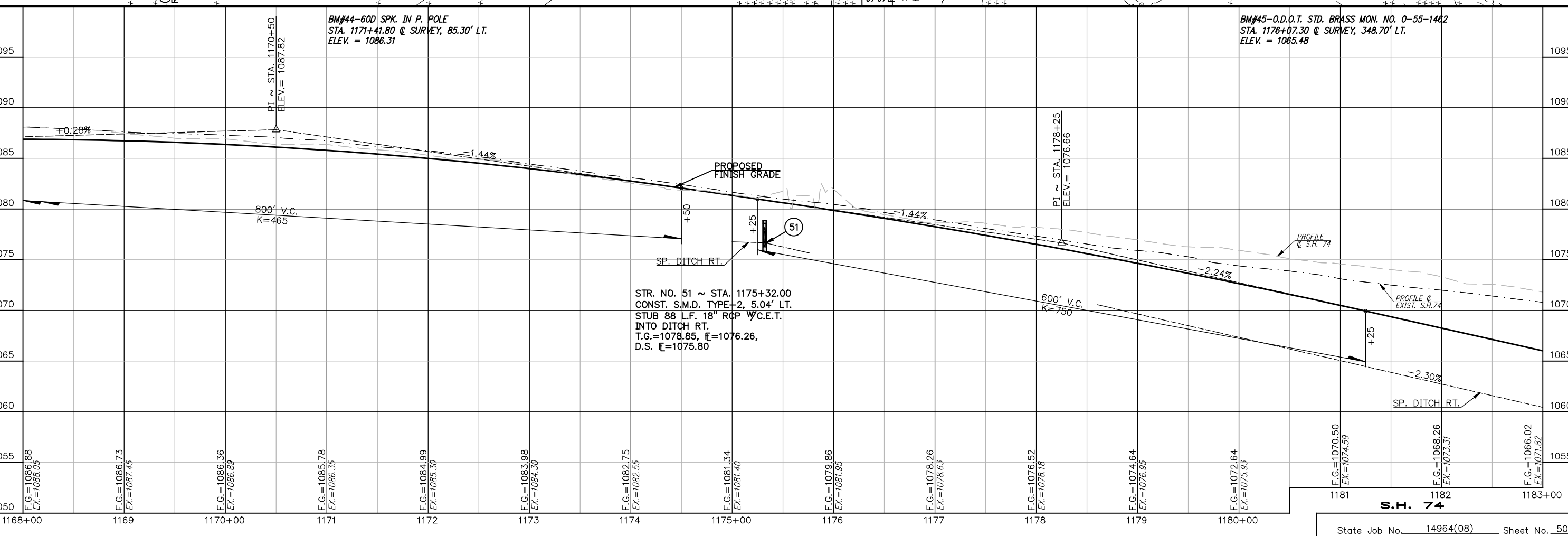
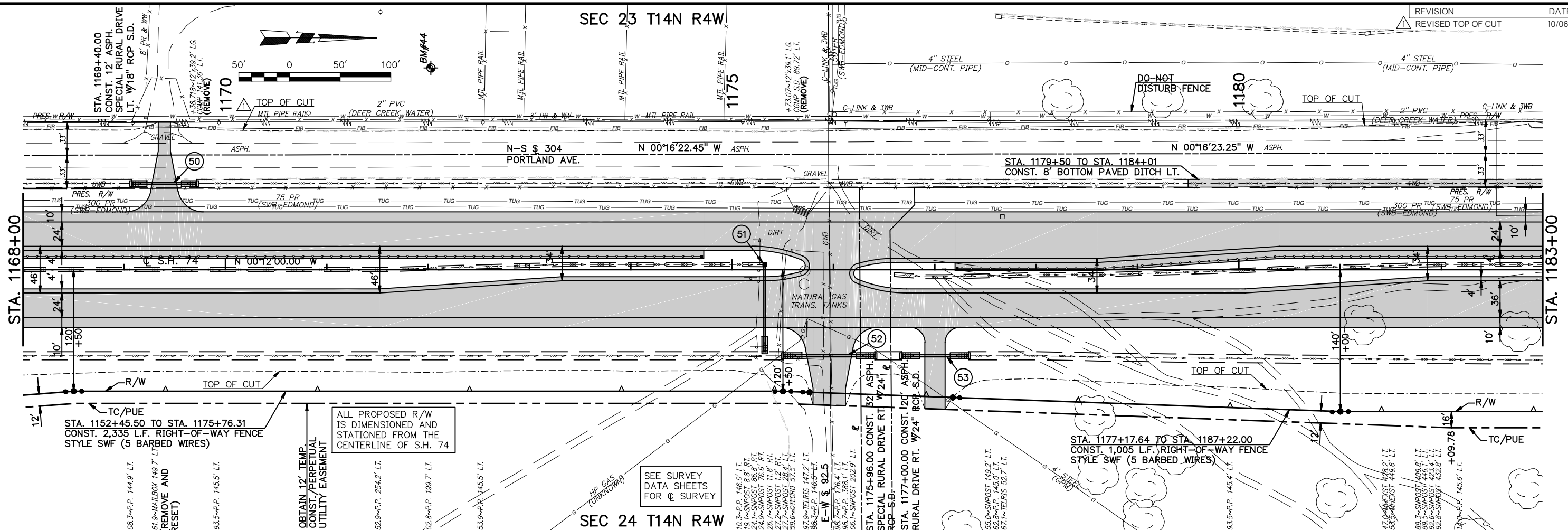


SEC 23 T14N R4W

SEC 24 T14N R4W



ALL PROPOSED R/W IS DIMENSIONED AND STATIONED FROM THE CENTERLINE OF S.H. 74

SEE SURVEY DATA SHEETS FOR SURVEY

STR. NO. 51 ~ STA. 1175+32.00
 CONST. S.M.D. TYPE+2, 5.04' LT.
 STUB 88 L.F. 18" RCP W/C.E.T.
 INTO DITCH RT.
 T.G.=1078.85, E=1076.26,
 D.S. E=1075.80